

# RGGI Medium and Heavy-Duty Charging Program

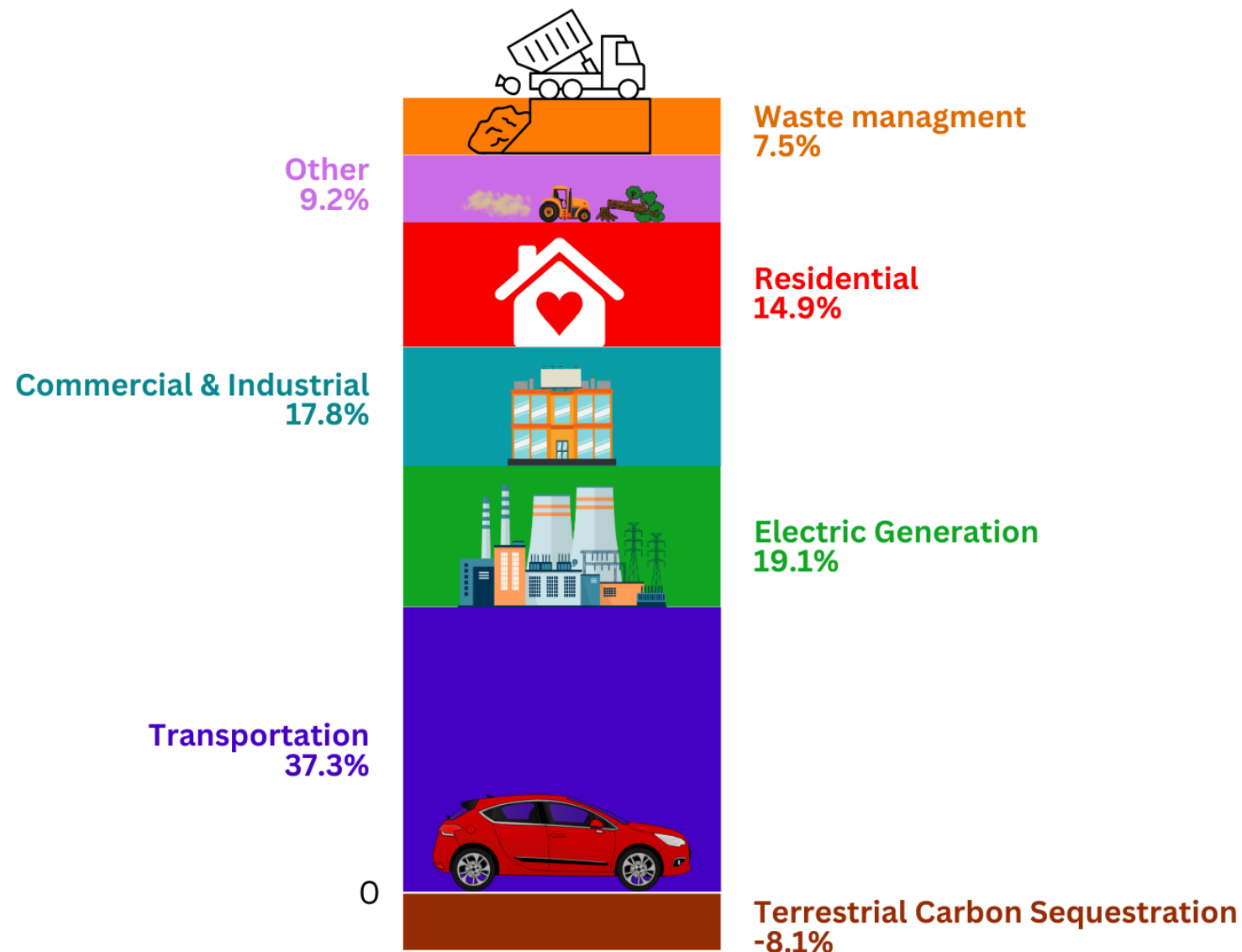
---

January 6, 2026  
Public Stakeholder Session

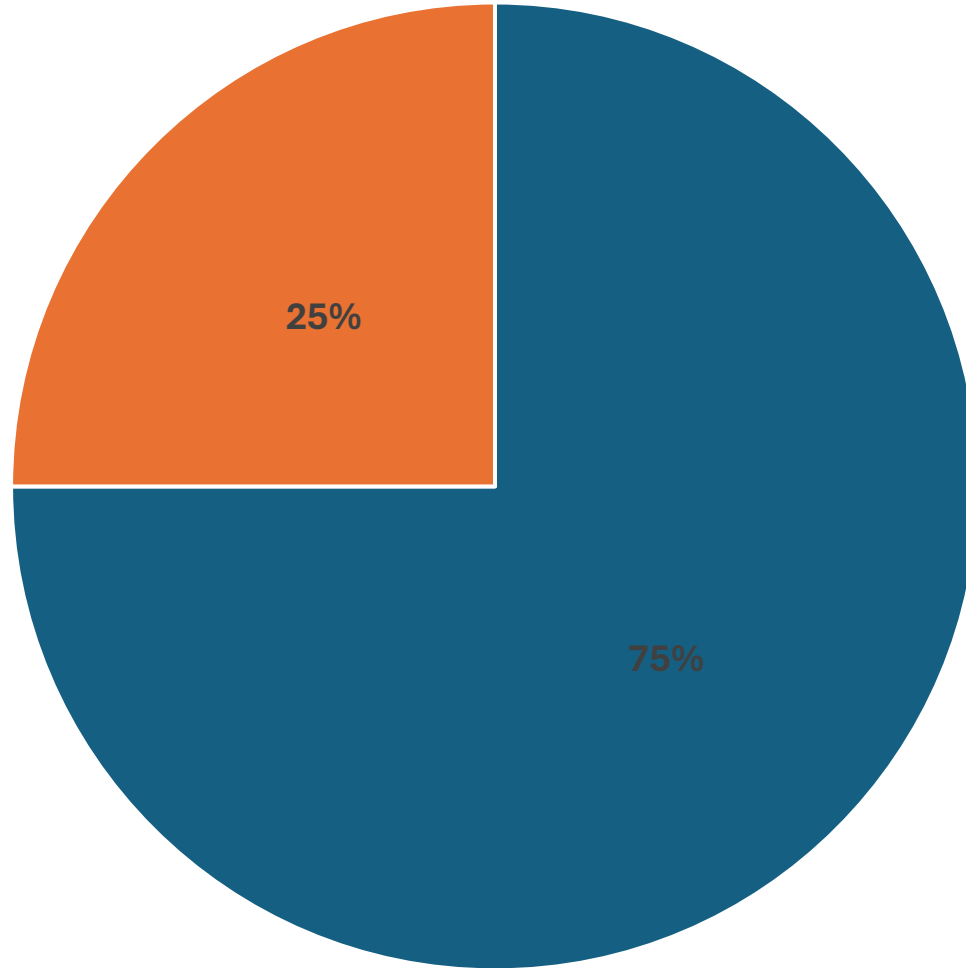
Aviv Bernstein Livne  
Transportation Coordinator



# New Jersey Emissions by Sector

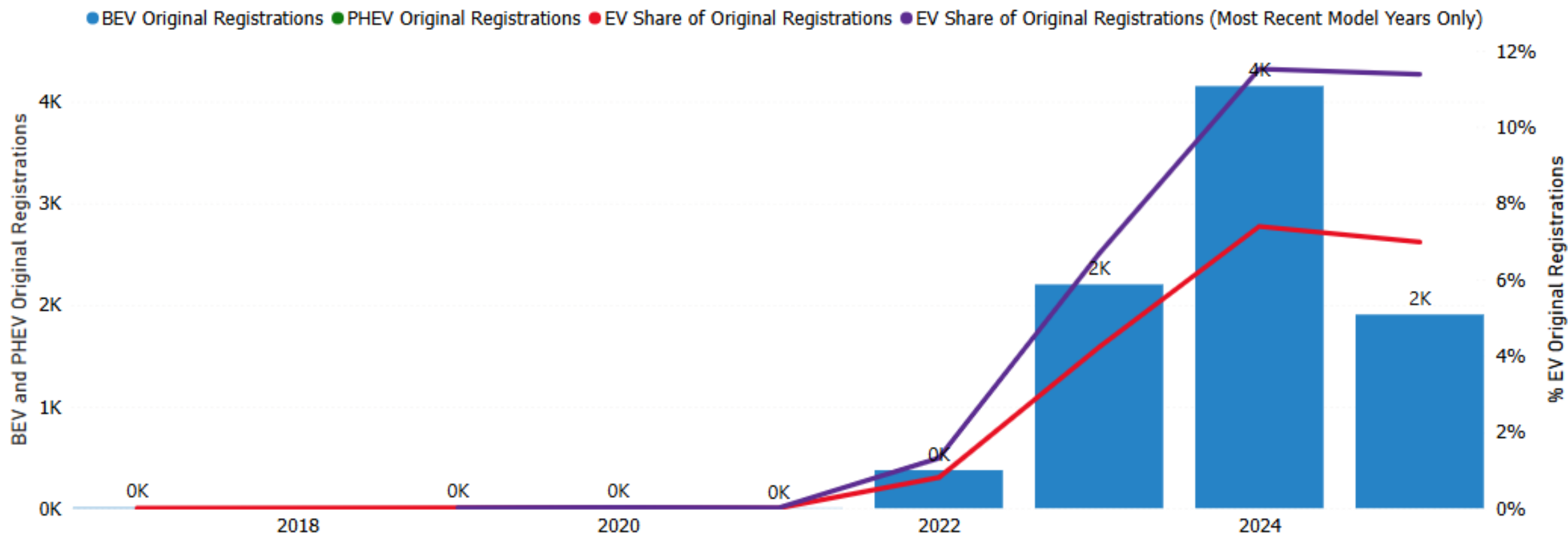


# Transportation Emissions



■ Light Duty ■ Medium & Heavy Duty

## Original EV Registrations



# Program Overview

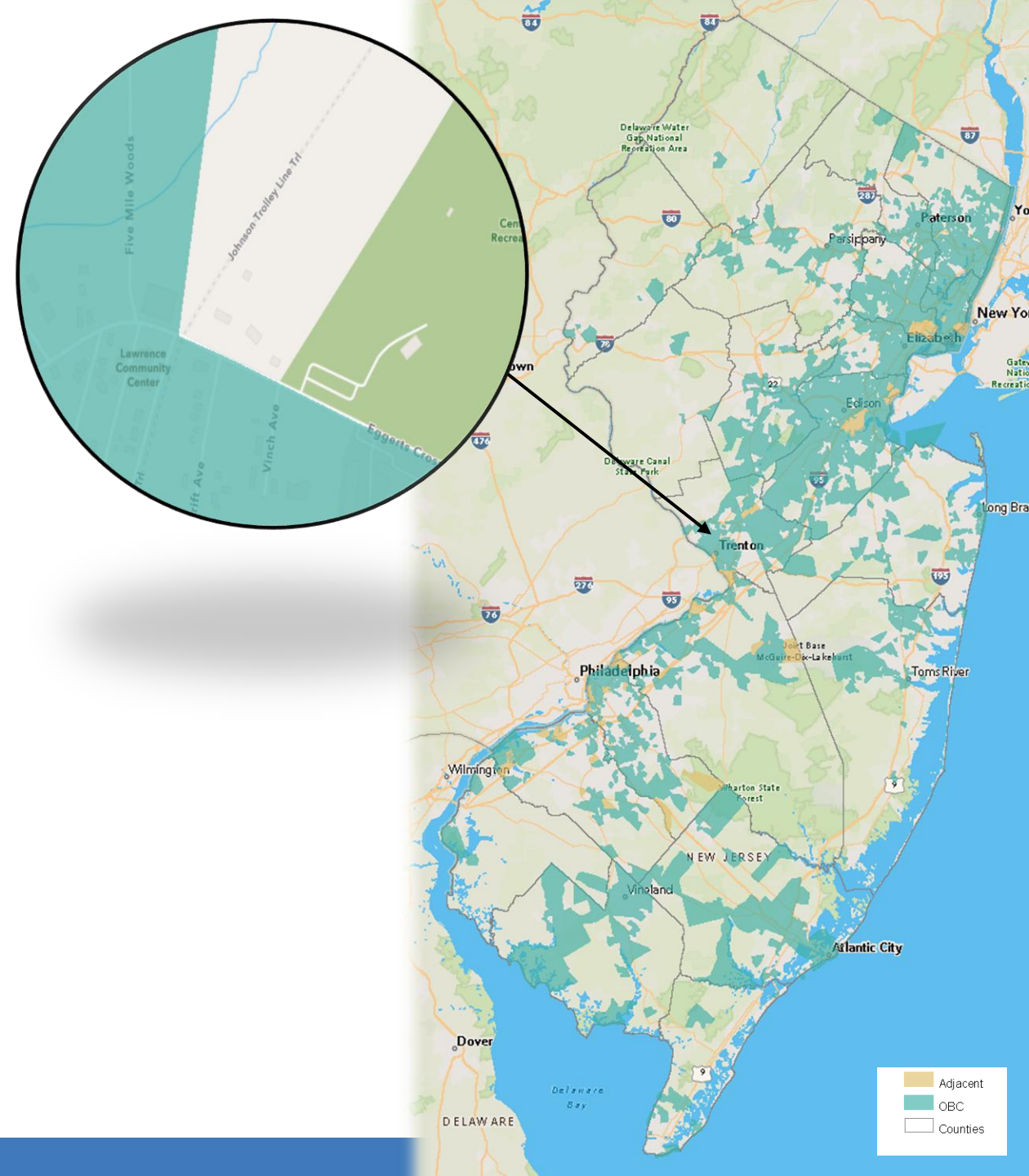
- The goal is to help businesses gain access to MHD charging, improve air quality, and help the state meet its climate goals.
- Approximately \$10 million in available funding
- Awards are \$225,000 per DCFC, up to 6 DCFC per application
- A single applicant can submit multiple applications if the applicant is applying for multiple locations
- Eligible applicants are businesses in Overburdened Communities (“OBC”)
- **Application Deadline 5/31/2026 at 5:00 p.m. via SAGE**

# Awards

- \$225,000 per DCFC
  - Eligibility: Located or operating in overburdened communities.
  - Ideal locations: Accessible by several local businesses that have, or are interested in acquiring, MHD EVs, such as warehouses or depots.
  - Public: All chargers must be publicly accessible.
- No incentives are available for private fleet charging
  - In the first round, incentives were available for private charging; however, under the round incentives are limited to only public charging.
  - The Economic Development Authority is launching their MHD Program which provides funding for private fleet chargers.

# How do I know if my site is in an OBC?

- An interactive OBC map is available at <https://dep.nj.gov/ej/law/>
- PDFs are available at <https://dep.nj.gov/ej/communities/#municipalities> at the municipality level (scroll to the bottom and expand the applicable county)



# Eligible Equipment and Expenditures (1/2)

- DCFC Chargers
  - Dual-port
  - State compliant, networked DCFC [EVSE Compliant Network Service Providers](#)
- Eligible Expenses
  - Charger(s)
  - Taxes on the charger(s)
  - Warranty on the charger(s)
  - Delivery and activation fees for the charger(s)
  - Other expenses including software costs are **not** covered.



# Eligible Equipment and Expenditures (2/2)

- Make Ready
- Eligible Expenses
  - The pre-wiring of electrical infrastructure
  - Includes service panels, junction boxes, conduit, wiring, etc., necessary to make a particular location able to accommodate EVSE on a “plug and play” basis.
  - Distribution system upgrades needed on site to accommodate the project

# Application Process (1/2)

1. Completing the application <https://njbpu.intelligrants.com/>
  - a. Select the MHD EV Charging Program application under the “My Opportunities” section of your home page in SAGE. Complete the application and save your progress. Do not submit till 1.b. is complete.
  - b. Concurrently, applicants must receive EDC review and upload documentation to SAGE.

# Application Process (2/2)

## **2. Submit the application by May 31, 2026 via SAGE.**

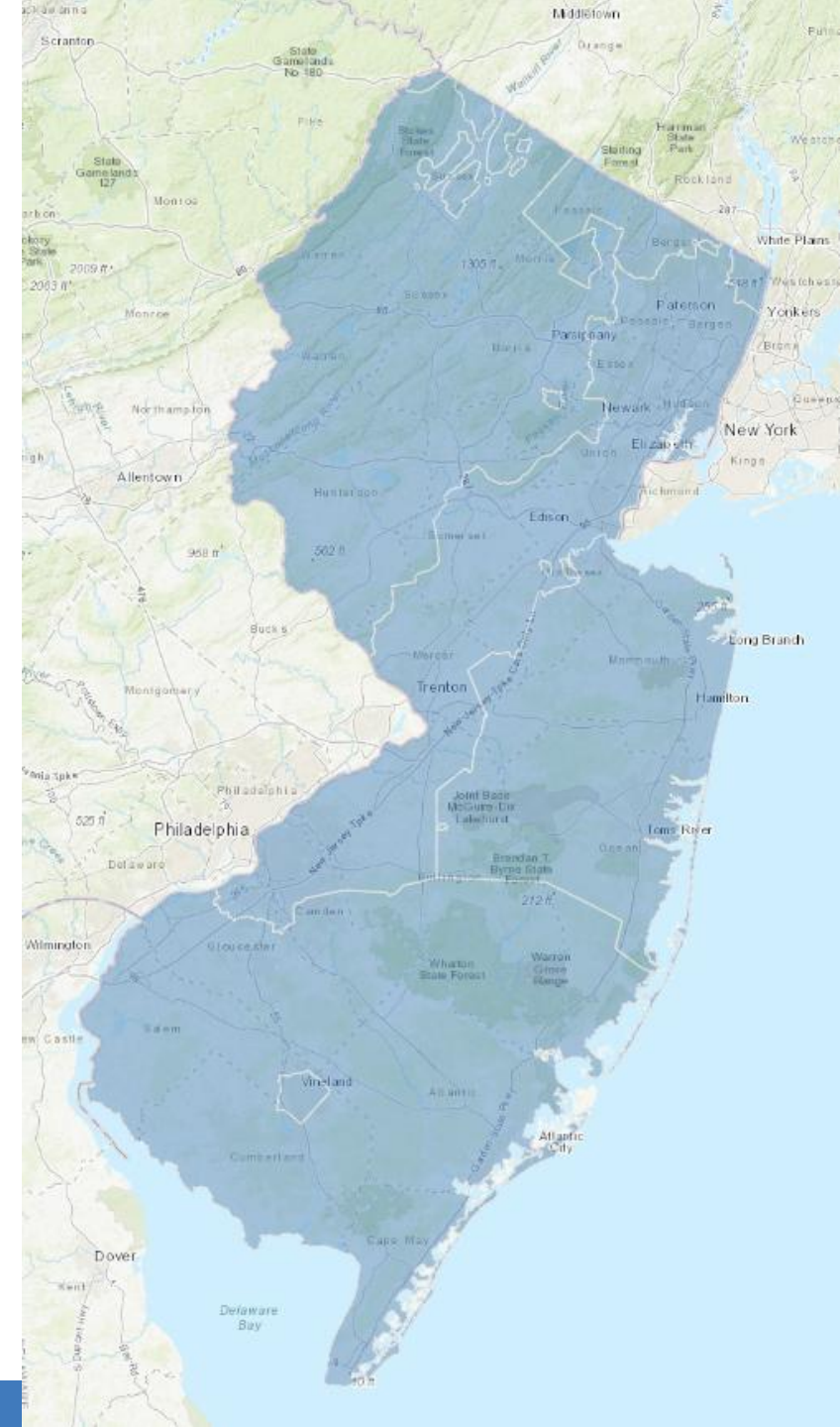
Applications without EDC documentation will be deemed administratively incomplete and will be returned to the applicant for correction. All documentation from 1.a. and 1.b. must be submitted via SAGE by May 31, 2026. Only administratively complete applications submitted by the deadline will be considered. Extensions will not be granted.

# EDC Review Overview

- **Talk to your utility early and often.**
- Applicants are required to confirm capacity through a utility capacity review.
  - Confirms site viability
  - Avoid unexpected expenses
- Applicants must submit documentation from their utility review in their application.

# EDC Review Process

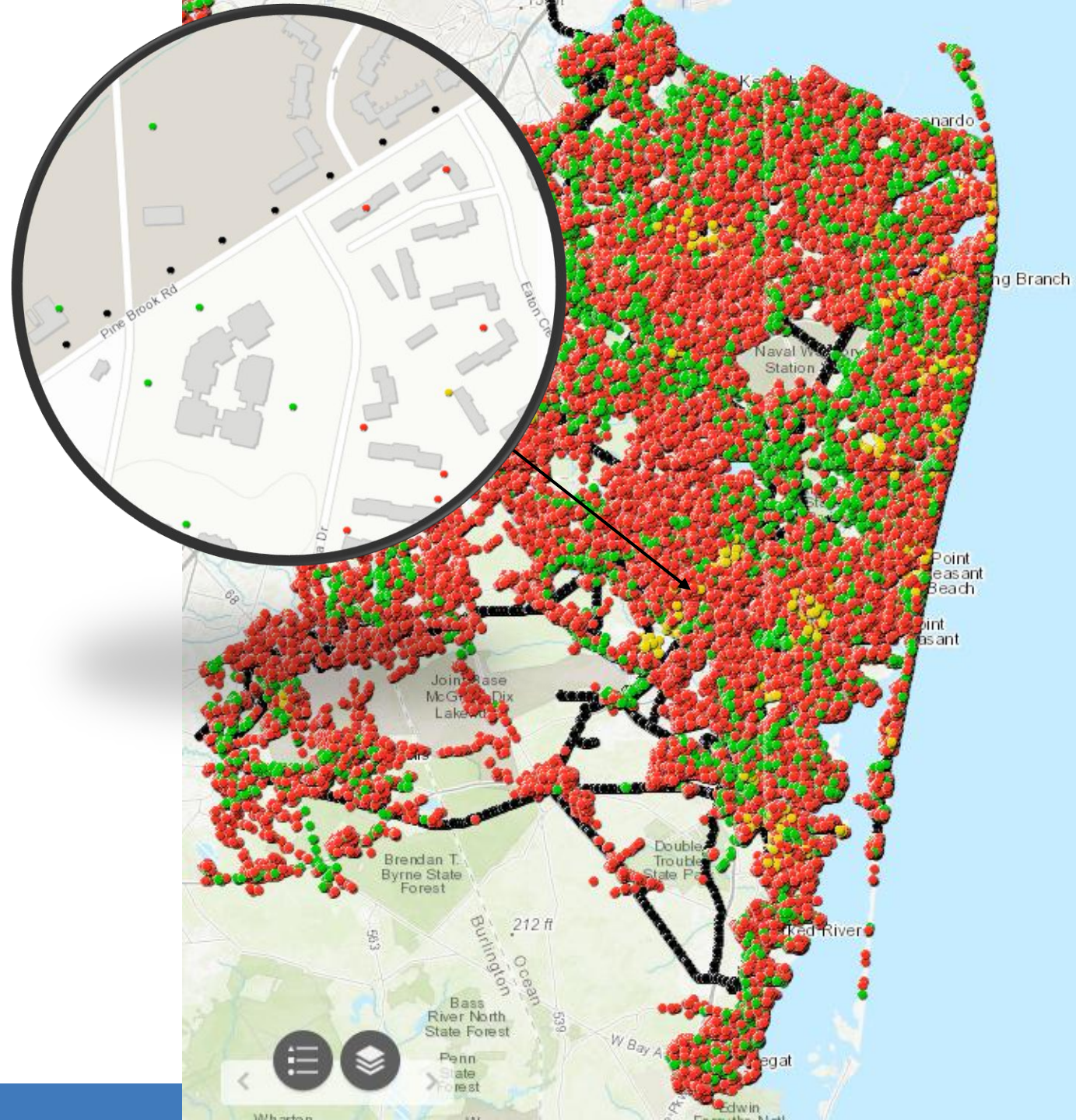
- To initiate request the review, Applicants must follow their utility's process.
- Utility service territories for any address can be located on <https://gisdata-njdep.opendata.arcgis.com/datasets/njdep::electric-utilities-territory-map-of-new-jersey/explore>.
- Detailed instructions can be found at: <https://njcleanenergy.com/EV>.





# EDC Review Documentation (1/3)

1. A picture of a capacity map for the proposed site showing enough capacity for the proposed project's load. For some sites, more study is needed, and the EDCs cannot provide a capacity map.



# EDC Review Documentation (2/3)

- The utility may determine that more study is needed.
- If the study determines there is capacity, the Applicant submit a letter from the EDC stating there is capacity.
- Lead times are approximately three (3) weeks, however, actual processing times vary and may increase during high volume EDC processing periods

# EDC Review Documentation (3/3)

- If the EDC, during additional study discussed above, finds that there does not exist sufficient capacity for the proposed project, then the Applicant must request, at the Applicant's expense, a feasibility study to be performed by the EDC.
- After its findings are complete, Applicant must submit a letter from the EDC confirming the lack of capacity, the results of the EDC feasibility study, and a commitment that the Applicant will cover any additional costs and still intends to proceed with the project.



# Timelines and Deadlines

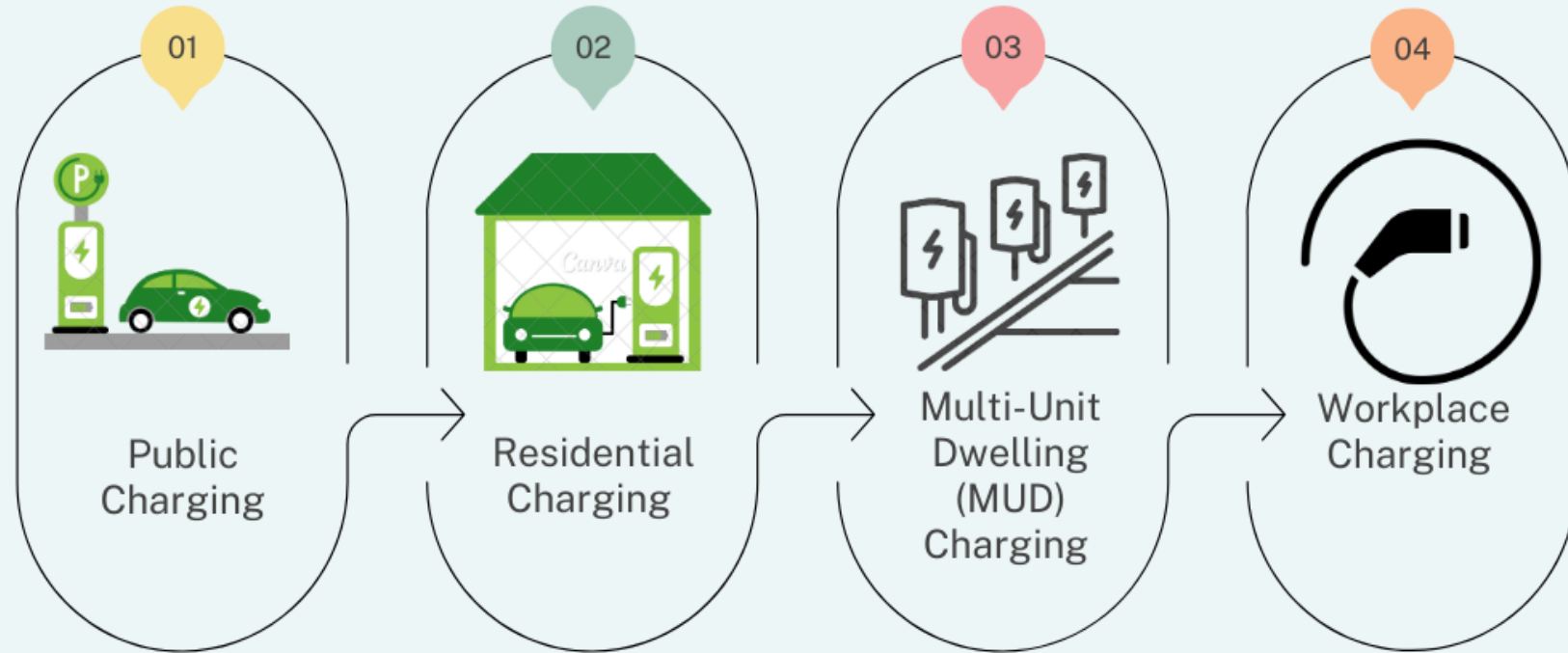
| Date                             | Activity   |
|----------------------------------|--|
| January 1, 2026 at 9:00 A.M. EST | The Program application will open and be available on SAGE.  |
| January 6, 2026 (today)          | Staff held a webinar providing an overview of the Program, application process, and EDC review.  |
| January 29, 2026                 | Staff will hold a webinar providing an overview of the Program, application process, and EDC review.   |
| March, 2026                      | Staff will hold a webinar providing an overview of the Program, application process, and EDC review. Staff will also address frequent inquiries. The specific date will be announced in January or February. |
| May, 2026                        | Staff will hold a webinar addressing final questions to support Applicants to submit applications before the deadline.   |
| May 31, 2026 at 5:00 P.M. EST    | The application window for the Program closes at 5:00 P.M. EST. Applications submitted after the deadline will not be accepted.  |

# Stacking

- BPU's MHD EV Charging Program **cannot** be stacked with other state funding, including but not limited to:
  - Department of Environmental Protection's It Pay\$ to Plug Program; and
  - Economic Development Authority's Charge Ahead Program
- BPU's MHD EV Charging Program **can** be stacked with upcoming utility incentives
  - EDCs currently have millions of dollars of funding for DCFC Make Ready
  - More money is coming through the MHD Proceedings.

**Talk to your  
utility early  
and often!**

## Utility Incentives provide funding for the Make Ready for different EV charging use cases



## **PUBLICLY ACCESIBLE**

*Available by schedule, subscription  
or first-come, first-serve, open 24-7.  
Designed for MHD vehicles (pull  
through stalls, higher wattage)*

## **PUBLIC FLEETS**

*Government owned fleets (ie  
municipal, county, state, police,  
school, NJ Transit)*

## **PUBLIC SERVING FLEETS**

*Third-party providers of public  
transportation (ie school buses,  
providers of NJ Transit, etc)*

## **PRIVATE FLEETS**

*Certain Private Fleets located in  
or serving OBMs or OBCS along  
Federal Freight EV Corridor*

## **TECHNICAL \$ PLANNING**

*Available for all fleets, MUD, public  
charging over 500 kW*

# **MHD Utility Filings Under Review**

# List of State and Utility Incentives

<https://chargeup.njcleanenergy.com/ev-savings-hub>



Available Funding FAQs Contact Us



[Program Overview](#)

[Car Shoppers](#)

[Dealers](#)

[Other Programs](#)

[Apply/Login](#)

## New Jersey EV Savings Hub



# Questions

# Regional Greenhouse Gas Initiative (RGGI) Medium and Heavy Duty (MHD) EV Charging Program

The Regional Greenhouse Gas Initiative (RGGI) Medium- and Heavy-Duty (MHD) EV Charging Program supports the purchase of eligible direct current fast charger (“DCFC”) EV equipment. Businesses located in or primarily operating in Overburdened Communities (OBCs), as defined by New Jersey’s Environmental Justice Law, are eligible applicants. Awards of up to \$225,000 per DCFC are available toward the purchase and installation of 150 kilowatt (kW) or greater dual-port, networked DCFC and Make-Ready. Chargers must be publicly available. The Application period opens on January 1, 2026 at 9:00 a.m. and closes on May 31, 2026 at 5:00 p.m.

Applicants must register in [BPU SAGE IGX](#) in order to access the application.

- [Application](#)
- [Notice of Funding Availability](#)
- [Electric Distribution Company \(EDC\) Review FAQ](#)
- [Scoring Criteria](#)

# More Information

@NJCleanEnergy, @NJBPU

**Aviv Bernstein Livne**

Transportation Coordinator

RGGI@bpu.nj.gov



**Twitter (X)**

[twitter.com/NJCleanEnergy](https://twitter.com/NJCleanEnergy)



**Facebook**

[facebook.com/NJCleanEnergy](https://facebook.com/NJCleanEnergy)



**LinkedIn**

[linkedin.com/company/njbpu](https://linkedin.com/company/njbpu)